



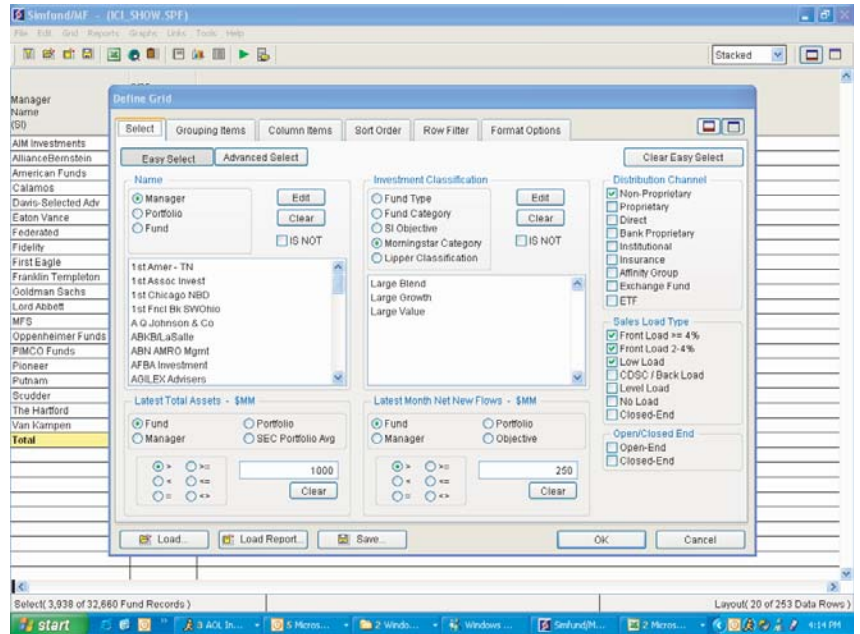
SIMFUND MF 4.0 Summary

Morningstar, Lipper and S&P All Integrated into One Platform

Official performance data, ratings and rankings integrated into Simfund analytics

Simfund® MF 4.0 is the latest upgrade to Strategic Insight's comprehensive current and historical mutual fund database. Simfund MF 4.0 contains a large number of data items, including assets, cash flows, performance, detailed expenses, volatility, portfolio statistics, pricing, service providers, advisory fee breakpoints and, now, official performance data, rankings and ratings from all major third party sources.

Simfund MF 4.0 integrates information from S&P, a new comprehensive data set from Morningstar (800+ data items), ICI and SEC N-SAR filings together with Strategic Insight's own extensive research. Additionally, over 700 Lipper data items will become part of Simfund through an optional module. The Simfund MF 4.0 upgrade is part of and integrates fully with our fee and expense and N-sar databases.



After initial release, and based on customer feedback, we will continue to enhance Simfund MF 4.0. Content highlights for Simfund MF 4.0 and the optional Lipper Module are listed on the back of this sheet. For further information, contact your Simfund account manager or call Strategic Insight at 212-944-4455.

Improve presentations with enhanced reports and graphs

Simfund 4.0 has been designed with enhanced software features for your reporting needs. You can now produce presentation-quality reports and graphs, using pre-formatted presentations, dashboard Portfolio Profiles and graphs - all easily reached from a new toolbar menu. Or, design custom reports, which can now be easily exported to other Windows software. When combined with the new Morningstar and Lipper data sets, you can now:

- Illustrate Total Return and Expense Analysis through the use of a new Floating Bar Graph feature.
- Track any Fund vs. Morningstar Category Averages and/or Lipper Classification Averages and/or S&P averages.
- Compare any Fund's performance vs. Morningstar or Lipper's customized Select Market or Best Fit Indexes.
- Include official Morningstar, Lipper or S&P percentile rankings inside your Simfund 'Scatter', 'Snail' and 'Bubble' graphs.
- Show Percent of Assets for any Company ranked within Morningstar, Lipper or S&P quartiles or quintiles.

Additionally, the new Simfund 4.0 software allows you to seamlessly export reports and graphs into PDF or Excel files for easy sharing and inclusion in your own reporting systems.

See back of sheet for new Simfund 4.0 data highlights

Strategic Insight

590 Fifth Avenue, New York NY 10036 • tel: (212) 944-4455 / fax: (212) 730-7730

www.sionline.com



SIMFUND MF 4.0 UPGRADE HIGHLIGHTS

NEW MORNINGSTAR DATA (in Simfund MF 4.0 Plus)

Fund Performance and Official Rankings

- Total Return -Annualized, Load Adjusted , After Tax
- Ranks - Absolute Ranks, Percentiles within Morningstar Category
- 1/3/6 Month, YTD, 1/3/5/10/15 Year plus 10 calendar years

Benchmarks

- Official Morningstar Category Average and Index Total Returns
- Primary, Secondary and Best Fit Market Index Returns

Morningstar Ratings

- Morningstar Risk Score Overall plus 3/5/10 Year
- Morningstar Return Score Overall plus 3/5/10 Year

NEW S&P DATA

- S&P Official Rankings
- S&P Star Rankings: 1/3/5/10 Year
- Fund counts
- Style Averages

OPTIONAL LIPPER DATA

Fund Performance and Official Classification Rankings

- Total Returns as of Latest Month End
- Rankings - Official Lipper Rank, Quartile, Quintile, Decile, Percentile and Number of Funds within Lipper Classification
- Periods - 1/3/6 Month, YTD, 1/3/5/10 Years

Survivorship Bias Free Rankings (Lipper Data Exclusive to Simfund MF 4.0)

- Official Fund Ranks calculated at past 5 calendar year-ends which include all funds in existence at that point in time.
- Rankings - Official Lipper Ranking, Quartile, Quintile, Decile and Percentiles within Lipper Classification as of past 5 year ends
- Total Returns
- Lipper Classification Averages for current period as well as for 1/3/5/10 Year periods as of each calendar year end
- Fund Classification as of each calendar year end

MPT Statistics

- Alpha, Beta, R-Squared
- Sharpe and Treynor Ratios 3/5/10 Year
- Vs Best Fit Index and Broad Market Index
- 3/5/10 Year

Portfolio Composition

- Asset Composition by Style and Market Cap
- Asset Composition by Country and Region
- Asset Composition by Equity Sectors
- Fixed-Income Composition

Top 10 Holdings

- Name of Security
- % of Funds Assets

NEW SI DATA (in Simfund MF 4.0 Plus)

Fee and Expense

- Historical Advisory Breakpoint Schedules
- Historical Admin Breakpoint Schedules
- Display of Multiple Sub-advisory Data
- Prospectus Advisory and Sub-advisory Data
- Prospectus Benchmark Index

Classification Benchmark

- Lipper Classification Averages
- Lipper Indexes Returns

Risk Measures

- Standard Deviation, Worst 3 Months, Down Side Risk (Preservation)
- Lipper Best Fit Index Data - Alpha, Beta, R-Squared vs. Best Fit Index, Lipper Classification and Broad Market Index

Lipper Leader Scores

- Total Return, Consistent Return, Preservation, Tax Efficiency, Expenses
- Overall, 3/5/10 Years
- Portfolio Flag, Score, Rankings and related details.

All Lipper data uploaded on 8th business day of month